



## **ASHLAND CHAMBER MEMBER LODGING**

### **MOTELS:**

**AmericInn of Ashland** 3009 Lake Shore Dr. E., 682-9950,  
800-634-3444. [www.ashlandwaterpark.com](http://www.ashlandwaterpark.com)

**Anderson Motel** 2200 Lake Shore Dr. W., 682-4658,  
800-727-2776. [www.andersonmotel.8k.com](http://www.andersonmotel.8k.com)

**Ashland Lake Superior Lodge** 30600 US Hwy. 2,  
682-5235, 800-452-7749. [www.ashlandlakesuperiorlodge.com](http://www.ashlandlakesuperiorlodge.com)

**Ashland Motel** 2300 Lake Shore Dr. W., 682-5503, 877-682-5503.  
[www.theashland.com](http://www.theashland.com)

**Ashland Super 8 Motel** 1610 Lake Shore Dr. W., 682-9377,  
800-800-8000. [www.super8.com](http://www.super8.com)

**Bayview Motel** 2419 E. Lake Shore Dr., 682-5256.  
[www.bayviewmotel.us](http://www.bayviewmotel.us)

**Crest Motel** US Hwy. 2 & Sanborn Ave., 682-6603, 800-657-1329.

**Hotel Chequamegon** 101 W. Lake Shore Dr., 682-9095,  
800-946-5555. [www.hotelc.com](http://www.hotelc.com)

**Lake Superior Suites** 101 E. Lake Shore Dr., 682-4551,  
888-666-2088. [www.lakesuperiorsuites.com](http://www.lakesuperiorsuites.com)

**Lakeside Motel** 1706 Lake Shore Dr. W., 682-4575.  
[www.lakesidemotelwisc.com](http://www.lakesidemotelwisc.com)

**River Rock Inn & Bait Shop** 1200 W. Lake Shore Dr., 682-3232.  
[www.riverrockinn.net](http://www.riverrockinn.net)

### **B&Bs:**

**Garden Guest House** 27875 St. Hwy. 137, 682-9240.  
[www.raspotnikfarm.com](http://www.raspotnikfarm.com)

**The Inn at Timber Cove** 1319 Sanborn Ave., 682-9600.  
[www.innatimbercove.com](http://www.innatimbercove.com)

**Second Wind Country Inn B&B** 30475 Carlson Rd., 682-1000.  
[www.secondwindcountryinn.com](http://www.secondwindcountryinn.com)

*For additional Area Listings  
visit our website*

**[www.visitashland.com](http://www.visitashland.com)**

# Ashland WISCONSIN

## Shopping & Dining GUIDE



**[www.visitashland.com](http://www.visitashland.com)**

# Welcome to Ashland!



Located on the shores of Lake Superior, Ashland serves as a regional hub for shopping, dining, lodging, special activities and events.

The Greater Ashland area offers a wide variety of four-season activities in an environment rich with natural resources. Ashland also serves as an important business and industrial center for the region, maintaining an active Ashland Area Chamber of Commerce and Ashland Area Development Corporation.

Visit the Ashland Area Chamber of Commerce at its information center located on U.S. Hwy. 2.

**[www.visitashland.com](http://www.visitashland.com)**

## RICH IN HISTORY

### Ashland Oredock

Originally constructed in 1916, the Oredock was the largest concrete structure of its kind in the world. At one time there were five oredocks on Chequamegon Bay on Lake Superior.



### Ashland Murals

Ashland has ten murals depicting actual ancestors and forefathers of Ashland. These spectacular murals have resulted in Ashland being named “The Historic Mural Capital of Wisconsin.” See pages 4 and 5 for a listing of each mural and its location. The artists will be working on the upcoming mural during the summer months. Stop by the corner of Main Street and Third Avenue West to see the artists at work.

### 950 Locomotive

Located at 400 3rd Avenue West near the Soo Line Depot. The 950 was built in 1900. At the time, it was the largest locomotive in the world and the only Decopad (10-wheel drive) ever built.

### Ashland Historic District

The Historic District is the home to many beautifully restored brownstone buildings from the 1800s. The retail shopping district is also home to the Ashland Historical Museum, 509 West Main Street, where information can be obtained about Ashland’s history.



## POINTS OF INTEREST

### Artesian Wells

A number of artesian wells are located along the Ashland shoreline, including Maslowski Beach and Prentice Park.

### Apostle Islands National Lakeshore

Enjoy the clear waters, sandy beaches, sea caves, historic fish camps, rustic camping, a ferry ride or a cruise around these 22 islands.

### Bad River Indian Reservation

Located east of Ashland along U.S. Hwy. 2 at Odanah, this Reservation has been the cultural, governmental and social center for the Bad River Chippewa Indians for generations. Experience the Bad River Casino and Convention Center.

### Chequamegon-Nicolet National Forest

Located approximately 15 minutes from Ashland, this special place provides 850,000 acres of many recreational opportunities for the outdoor enthusiast. Visitors can enjoy camping, hiking, boating, nature study, picnicking, scenic drives, hunting, snowshoeing, bird watching, outdoor photography, cross country skiing and more.

### Lake Superior Waterfront Trail

This trail is a 10-mile paved, continuous trail linking Maslowski Beach on the west end of town, past Wal-Mart and through residential areas to the east. Visitors and residents will enjoy not only the panoramic views of Lake Superior, but also the opportunity to utilize the waterfront facilities available to the public such as the boat landing, beaches and playgrounds. See the City Map on pages 6 and 7.

### Northern Great Lakes Visitor Center

Located just west of Ashland, the Visitor Center provides opportunities to learn about the region’s history, culture and natural resources. Features of the Visitor Center include an observation tower, 100-seat theatre, visitor information area, interpretive exhibits, gift shop and outdoor amphitheater. The Center is open daily. The State Historical Society of Wisconsin also maintains their History Center and Archives in the Visitor Center.

## PARKS

### Bayview Park

Located on U.S. Hwy. 2 East, this park affords the best view of Ashland’s Lighthouse at the end of the breakwater. Amenities include a beach, swimming, fishing pier, a picnic area and playground.

### Kreher Park

This park features a beach, swimming, boat launching ramp, RV campsites, showers and a playground. It is located on the shore of Lake Superior between the Ashland Marina and the Oredock.



### Memorial Park

Located on U.S. Hwy. 2 in the center of Ashland, this park features a bandshell which is the site of outdoor concerts and other activities during the summer.

### Maslowski Beach

Located on U.S. Hwy. 2 West, this beach offers swimming, a playground, a pavilion and an artesian well.

### Prentice Park

The largest of Ashland’s parks, Prentice Park is located one block from U.S. Hwy. 2 West on Turner Road. Its 100 acres features walking trails, artesian wells, boardwalks along the Fish Creek Slough, campsites, a pavilion and playground. This is a natural wildlife viewing area for birds and many species of waterfowl.

### The Central Rail Yard Park

This park has playground equipment for the kids. For summer recreation it has tennis courts, baseball fields, a basketball court and a skate park. The park is located behind the Bretting Community Center and the Bay Area Civic Center Hockey Arena.



## EVENTS

**January** Northwoods Harness Club Sleigh & Cutter Parade

**February** Book Across the Bay Cross Country Ski/Snowshoe Race

**March** Ice Fishing Contest on Lake Superior, Bay Area Farm & Garden Show

**April** Home & Sport Show, Gun Show, Smelt Season, Chequamegon Bay Film Festival

**May** Chequamegon Bay Birding & Nature Festival, Chequamegon Woods to Water Relay, House to House Garage Sale, Stock Car Racing

**June** Mural Fest, Big Granite Inline Marathon & Half-Marathon, Superior Vistas Bike Tour, Kid’s Fishing Day, Stock Car Racing

**July** Saturdays Farmers Market, Ice Cream Social, 4th of July Celebration, Fire Run, Fireworks, Cemetery Walk, Parade, Bay Area Rod & Custom Car Show, Bay Days Festival, Maxwell Street Days, Chequamegon Bay Sprint Triathlon, Stock Car Racing



**August** Saturdays Farmers Market, Northern Wisconsin Rod & Gun Club Kid’s Fishing Party, Stock Car Racing

**September** Saturdays Farmers Market, Ashland County Fair, MarketFest, Bass Kickin’ on the Bay Smallmouth Bass Contest

**October** Saturdays Farmers Market, Red Clay Classic, WhistleStop Marathon & Half-Marathon, Crusin’ the Corridor 5k & 10k, “Little Engine That Could” Toddler Run, Blues & Brews Fest



**November** Christmas Retail Open Houses in Historic Downtown, Big Water Film Festival

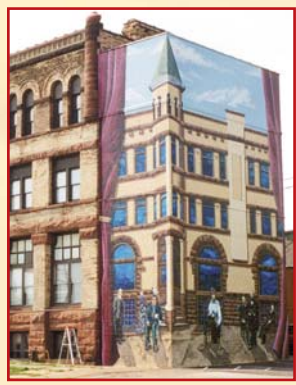
**December** Annual Garland City of the North Christmas Parade, Customer Appreciation Day.

**ASHLAND**  
has been named  
**Historic Mural Capital**  
OF WISCONSIN  
August 2005

# The Ashland Mural Walk

The 8-block Main Street Business District, listed on the National Register for Historic Places, is the background for a fascinating walk through Ashland's history as seen through the eyes of Ashland's mural artists Kelly Meredith and Susan Prentice Martinsen.

Brochure/Map available at the Ashland Area Chamber of Commerce.

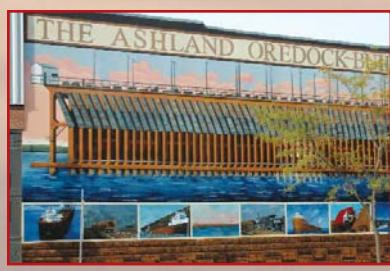
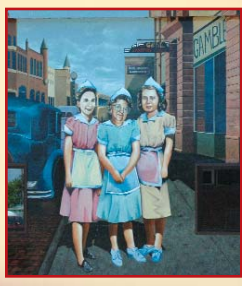


**#1 Asaph Whittlesey Mural**  
Corner of Hwy. 2 & 13,  
Summer 1998

The Asaph Whittlesey Mural depicts the Ashland National Bank as it appeared in 1892. The bank was located on the Main Street end of the building where the mural is painted.

**#2 Waitresses Mural**  
124 W. Main Street, Summer 2007

The owner of the building wanted to honor the women who raised him and had recently passed away. This photograph was taken in front of the building the mural was painted on in the 40's.



**#3 Oredock Mural – under construction**  
301 W. Main Street,  
Summer 2009-2010

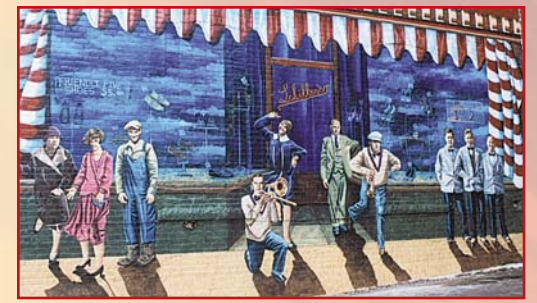
The Ashland Oredock was built in 1916, measured out at 1,800 feet, and was the largest concrete dock in the world. A beloved landmark to the city of Ashland and its residents, it recalls a time past when shipping was such an integral part of Ashland.



**#4 Aviation, 1920s Jazz Era & Schiller's Shoe Store Mural**

Lake side of the 300 block, west of Main, Summer 1999

This mural celebrates Ashland's early aviation history, its jazz past, as well as the Schiller's Shoe Store, which was located in the store it is painted on.



**#7 Veterans Mural**  
Vaughn Avenue & Main Street

Honoring the Ashland area military men and women.

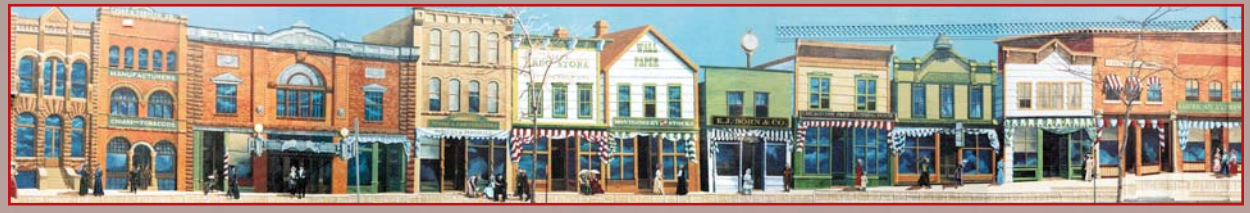
A listing of people appearing on the murals as well as a variety of mural souvenirs can be obtained at the Ashland Museum, located at 509 W. Main St.



**#5 Lumberjack Mural**

4th Avenue W. and Main Street, Summer 2000

The Lumberjack Mural depicts the men (and one rare woman) of Ashland's lumber era, when the work day was from 4 am until dark, first freeze to first thaw. An average day's work for a pair of "sawyers" was 100 pine logs, at \$1.00 a day. In 1893, 10,000 lumberjacks worked in the logging camps to supply Ashland's ten sawmills.



**#6 Storefront Mural 2002**

4th Avenue West & Main Street, Summer 2002-2003

A compilation of various Ashland storefronts from the early 1900's.



**#10 Lighthouse Mural**

Corner of Main Street & Chapple Avenue, Spring 2000

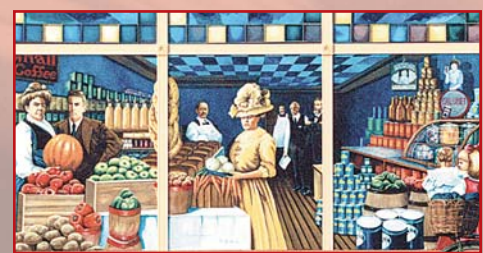
This mural depicts 3 lighthouses (Devils Island, Sand Island and Outer Island) located within the Apostle Islands in Chequamegon Bay and their "keepers."



**#8 50's Snapshots Mural**

612 West Main Street, Summer 2007

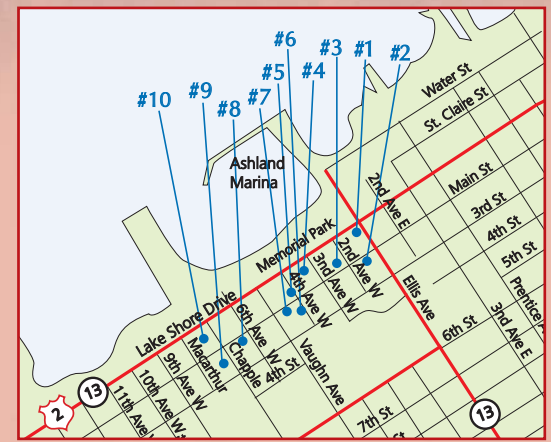
A 1950's hamburger/ice cream shop at that time was in the planning stage, and the artists were asked to design a mural that would depict the 50's era.



**#9 Dhooge's Store Mural**

213 Chapple Avenue, Spring 2000

This mural depicts Dhooge's Grocery of Ashland in 1910. An era when settlers were "farming the cut over" and going to town for supplies often meant a 2-day event for area settlers.



**Visit Business Murals at:**

- Chequamegon Theater Association  
Main Street & 5th Avenue East
- McDonalds Restaurant (inside)  
Hwy. 2 & MacArthur Avenue
- Best Western Lake Superior Lodge (inside)  
Hwy. 2, west of Ashland

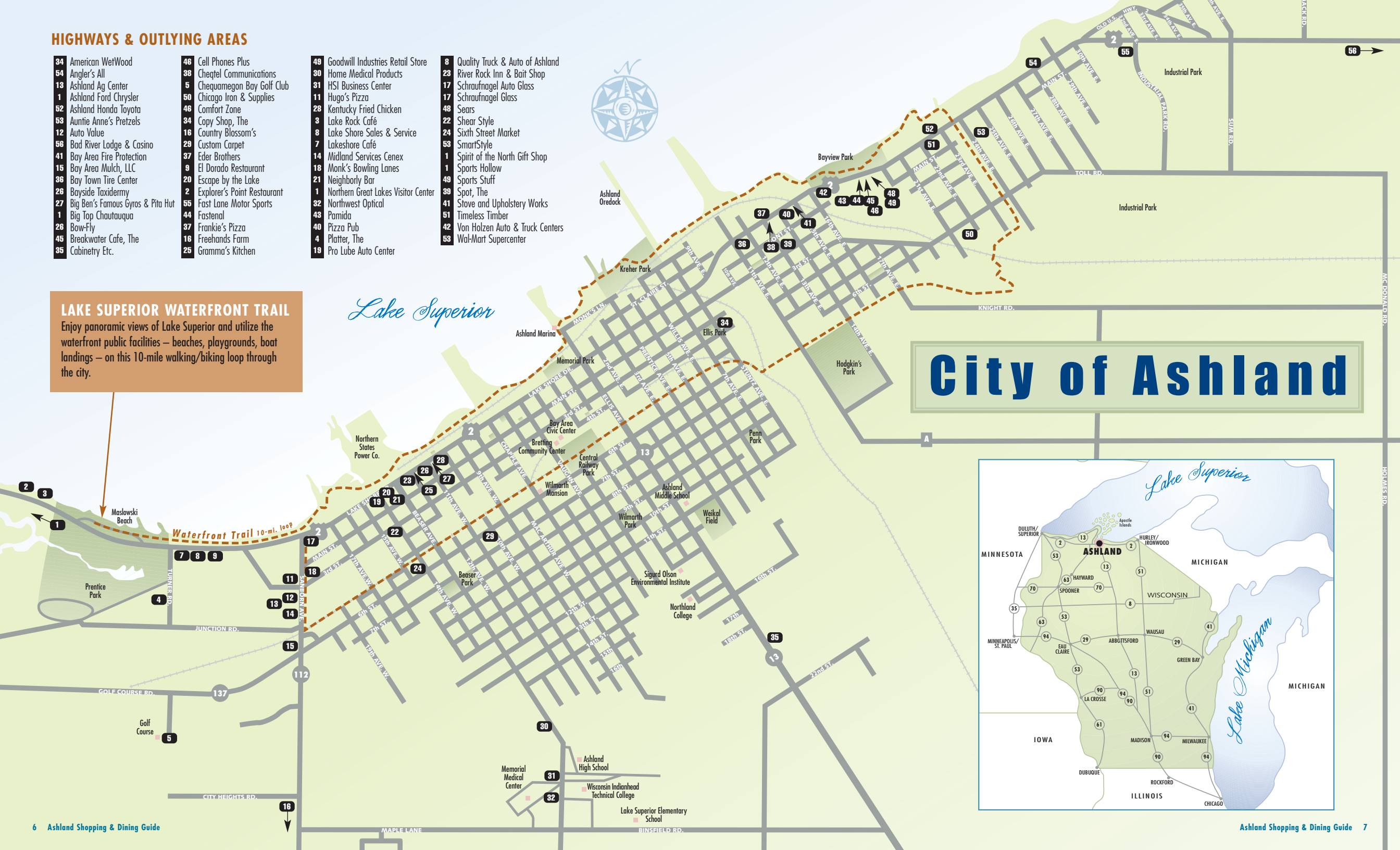


## HIGHWAYS & OUTLYING AREAS

- |                                      |                               |                                       |                                    |
|--------------------------------------|-------------------------------|---------------------------------------|------------------------------------|
| 34 American WetWood                  | 46 Cell Phones Plus           | 48 Goodwill Industries Retail Store   | 8 Quality Truck & Auto of Ashland  |
| 54 Angler's All                      | 38 Cheatel Communications     | 30 Home Medical Products              | 23 River Rock Inn & Bait Shop      |
| 13 Ashland Ag Center                 | 5 Chequamegon Bay Golf Club   | 31 HSI Business Center                | 17 Schraufnagel Auto Glass         |
| 1 Ashland Ford Chrysler              | 50 Chicago Iron & Supplies    | 11 Hugo's Pizza                       | 17 Schraufnagel Glass              |
| 52 Ashland Honda Toyota              | 46 Comfort Zone               | 28 Kentucky Fried Chicken             | 48 Sears                           |
| 53 Auntie Anne's Pretzels            | 34 Copy Shop, The             | 3 Lake Rock Café                      | 22 Shear Style                     |
| 12 Auto Value                        | 16 Country Blossom's          | 8 Lake Shore Sales & Service          | 24 Sixth Street Market             |
| 56 Bad River Lodge & Casino          | 29 Custom Carpet              | 7 Lakeshore Cafe                      | 53 SmartStyle                      |
| 41 Bay Area Fire Protection          | 37 Eder Brothers              | 14 Midland Services Cenex             | 1 Spirit of the North Gift Shop    |
| 15 Bay Area Mulch, LLC               | 9 El Dorado Restaurant        | 18 Monk's Bowling Lanes               | 1 Sports Hollow                    |
| 36 Bay Town Tire Center              | 20 Escape by the Lake         | 21 Neighborly Bar                     | 49 Sports Stuff                    |
| 26 Bayside Taxidermy                 | 2 Explorer's Point Restaurant | 1 Northern Great Lakes Visitor Center | 30 Spot, The                       |
| 27 Big Ben's Famous Gyros & Pita Hut | 55 Fast Lane Motor Sports     | 32 Northwest Optical                  | 41 Stove and Upholstery Works      |
| 1 Big Top Chautauqua                 | 44 Fastenal                   | 43 Pamida                             | 41 Timeless Timber                 |
| 26 Bow-Fly                           | 37 Frankie's Pizza            | 40 Pizza Pub                          | 42 Von Holzen Auto & Truck Centers |
| 45 Breakwater Cafe, The              | 16 Freehands Farm             | 4 Platter, The                        | 4 Wal-Mart Supercenter             |
| 35 Cabinetry Etc.                    | 25 Gramma's Kitchen           | 19 Pro Lube Auto Center               |                                    |

## LAKE SUPERIOR WATERFRONT TRAIL

Enjoy panoramic views of Lake Superior and utilize the waterfront public facilities — beaches, playgrounds, boat landings — on this 10-mile walking/biking loop through the city.



# City of Ashland



## DOWNTOWN AREA

- 163 2nd Street Bistro
- 98 Ace Hardware
- 65 Alley, The
- 101 Antiques on Main
- 62 Arby's
- 91 Army-Navy Store
- 85 Ashland Baking Company
- 152 Ashland County Market
- 109 Ashland Floral
- 90 Ashland Museum & Gift Shop
- 154 Ashland Holiday Station
- 112 Ashland Jewelers
- 57 Ashland Lake Shore Holiday
- 192 Ashland Lock & Key
- 115 Associated Bank
- 68 Axel's Saw & Tool Sharpening
- 86 Bargain Hut

- 97 Bay Area Pawn
- 108 Bay City Cycles
- 106 Bay Theater
- 79 Black Cat Coffeehouse, The
- 78 Bob's Factory Outlet
- 122 Book World
- 84 Buddie's Burgers
- 155 Burger King
- 107 California Nails
- 172 Carlson Building Supply
- 172 CBS Appliance & Home Center
- 182 Cenex Townmart
- 80 Chequamegon Food Cooperative
- 81 Cheq. Health & Fitness Club
- 180 Cigo Quik Food Mart
- 136 Cold Fusion of Ashland

- 157 Color Center
- 187 Country Kitchen
- 164 Craft Connection, The
- 160 Daily Press, The
- 179 Dairy Queen
- 71 Dave's Affordable Furniture
- 65 Deepwater Grille, LC Wilmarth's
- 125 Designers Outlet
- 187 Dollar Cents
- 89 Dugger Heating & Cooling
- 128 Eclectic
- 178 Ed's Safari
- 121 Elle Steven's Hallmark
- 83 Embellishments
- 80 Evergreen Country Shopper
- 137 Eye Glass Shoppe
- 160 Family Video

- 168 Fifth Quarter, The
- 102 Gabriele's Cookies & Chocolates
- 74 Gail's Hair Fashions
- 95 Garland City Inspirations
- 128 Glik's
- 87 Golden Glow Cafe
- 77 Grubie's
- 69 Hair Affair
- 153 Happy Panda
- 82 Heart Graphics
- 191 Hec's Bar
- 102 Heike's Blumen Garden
- 96 Hitt's Fine Furniture
- 148 Home Expressions
- 141 Hotel Chequamegon
- 93 Huhn Rx Drug
- 103 JC Moon

- 105 JCPenney
- 89 Johnson Flower Shop
- 67 Lake Sup. Cleaners & Launderer
- 138 Lakeside Products
- 186 Little Caesar's Pizza
- 158 M&I, Marshall & Ilsley Bank
- 119 Mainland Clothing
- 111 Malmberg's Jewelers
- 127 Maurices
- 69 McDonald's
- 178 McRae True Value Hardware
- 181 Medicine Shoppe Pharmacy
- 181 Midas
- 114 Mobile Connection
- 141 Molly Coopers
- 92 Moore's Clothes 'N Things
- 123 Movies on Main

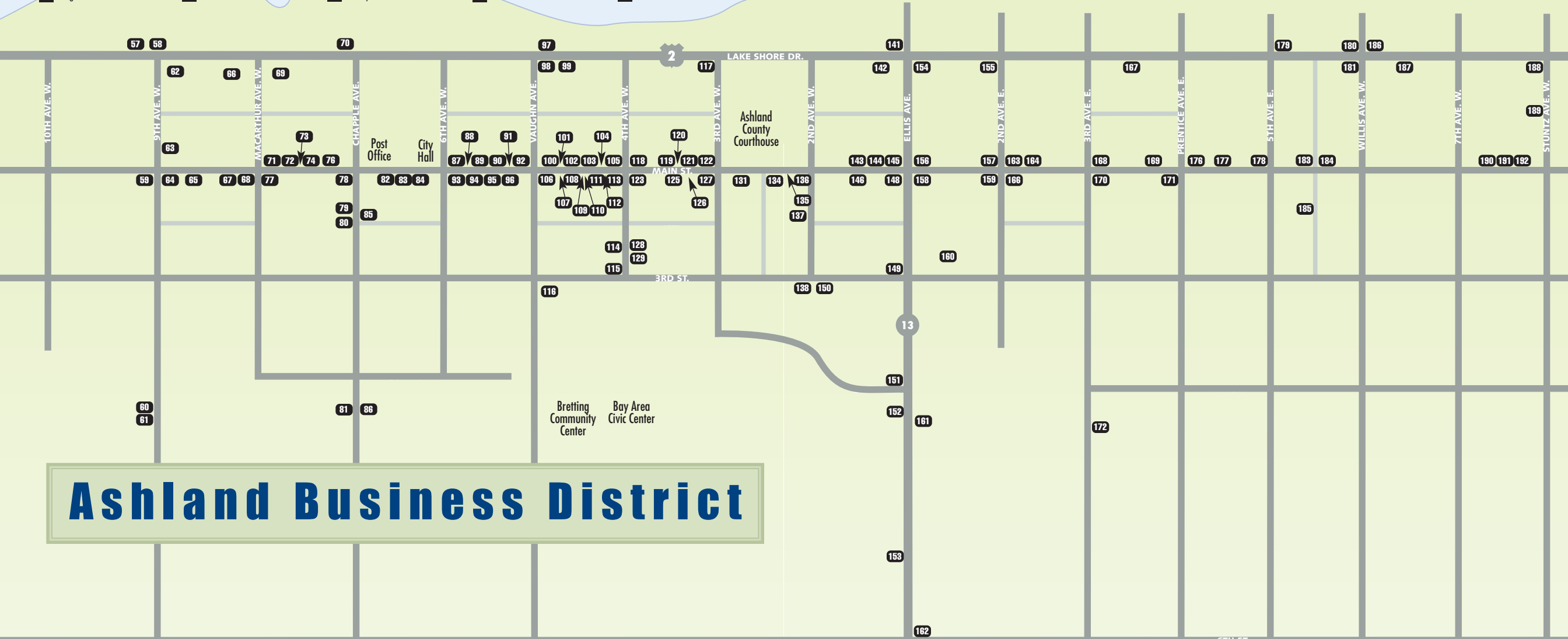
- 184 MUGS
- 102 Music Center, The
- 149 NAPA Auto Parts
- 117 New China Restaurant & Lounge
- 94 New England Store
- 135 Northern Business Products
- 148 Northern Photographics/NP Studio
- 118 Northern State Bank
- 143 Northwoods Comm. Credit Union
- 100 Northwoods Dyeworks
- 129 Oasis Cafe
- 104 Office Bar
- 171 Omer Nelson Electric, Inc.
- 88 One-on-One Hair Designing
- 76 Painted Cottage, The
- 145 Pathways Transfer

- 61 Printing Plus/Screen Line
- 189 R's Auto Body
- 107 Republic Vietnamese Restaurant
- 185 Rinehart Theatre/CTA
- 144 Satellite Services North
- 131 Sateren Eye Care
- 120 Scissor's Edge
- 72 Scott & Ar's Bar
- 66 Shell Station
- 167 Sherwin Williams Co.
- 110 Shoe Shack, The
- 88 Snap Fitness
- 65 South Shore Brewery
- 189 Stagecoach, The
- 68 Star Liquor
- 116 Stitch Witch

- 188 Styl'n Up North
- 58 Subway
- 183 Super H Foods
- 177 Superior Automotive
- 161 Superior Choice Credit Union
- 100 Superior Framing & Gallery
- 70 Taco John's
- 190 Tattoo Alley
- 134 Thrift Shop
- 113 Trendy Fashions
- 156 Upper Cut
- 84 Vacuum Express
- 170 VHS Cleaning Service
- 142 Walgreens
- 73 Wendy's Widgets
- 186 Zifko's Tire & Battery Supply



Lake Superior



# Ashland Business District

MAP # / NAME & LOCATION / DESCRIPTION



ANTIQUES

101 **Antiques on Main** 417 Main St. W., 682-9437.



APPLIANCES/FURNITURE

78 **Bob's Factory Outlet** 700 W. Main St., 682-2662. Ashland's largest furniture store; carrying quality home furnishings: Lane, Ashley, Bestcraft & Simmons mattresses. Financing & free delivery within 60 mi. [www.bobsfactoryoutlet.com](http://www.bobsfactoryoutlet.com)

172 **CBS Appliance & Home Center** 414 3rd Ave E., 682-2652.

46 **Comfort Zone** 1810 E. Lake Shore Dr., 682-2155.

96 **Hitt's Fine Furniture** 504 Main St. W., 682-8900 or 682-6161. Offering first quality brand name furniture at everyday low prices. Finished & unfinished real wood furniture, full service stain center for the do-it-yourselfer, custom finishing available. Free delivery, layaway & financing. "The furniture you want...the way you want it." [www.hittsfinefurniture.net](http://www.hittsfinefurniture.net)

48 **Sears** 1908 E. Lake Shore Dr., 685-2736. For all your appliance needs. The Good Life at a Great Price.



ART GALLERIES

100 **Superior Framing & Gallery** 419 Main St. W., 682-4625. Area's largest gallery, offers originals, prints & photography by local artists, gifts & home décor. Also offers quality custom framing with a certified framer on staff.



AUTO

1 **Ashland Ford Chrysler** 28715 U.S. Hwy. 2 W., 682-8400. Ford, Chrysler, Dodge & Jeep vehicles.

52 **Ashland Honda Toyota** 2301 E. Lake Shore Dr., 682-5252. [www.ashlandhondatoyota.com](http://www.ashlandhondatoyota.com)

12 **Auto Value** 315 Sanborn Ave., 682-4829.

23 **Bay Area Transport Taxi Service, LLC** 682-4588. We are open 7 days a week & 24 hrs. on Fri. & Sat. nights. For your convenience, local, long distance & delivery services are available. A deluxe, 11-passenger van are available for all your special events.

36 **Bay Town Tire Center** 1100 E. Lake Shore Dr., 682-9700.

37 **Eder Bros.** 1301 Lake Shore Dr. E., 682-3066.

8 **Lake Shore Sales & Service** 2502 W. Lake Shore Dr., 682-9790.

181 **Midas** 522 E. Lake Shore Dr., 682-3557.

149 **NAPA Auto Parts** 103 3rd St. W., 682-2791. Supplier of top quality automotive, truck, & snowmobile parts.

145 **Pathways Transfer** 101 W. Main St., 682-0670.

19 **Pro Lube Auto Center** 1400 Lake Shore Dr. W., 682-9510. Home of the area's only 10-minute oil change. No appointments necessary.

8 **Quality Truck & Auto of Ashland** 2524 W. Lake Shore Dr., 685-0030.

189 **R's Auto Body** 113 Stuntz Ave., 682-5911.

17 **Schraufnagel Auto Glass** 1720 Lake Shore Dr. West, 682-0361. Auto glass repair & replacement.

177 **Superior Automotive** 417 East Main St., 682-4000.

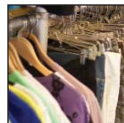
42 **Von Holzen Auto & Truck Centers** 1606 E. Lake Shore Dr., 682-8141. "Full GM Line Dealer" Chevrolet, Buick, Pontiac, Cadillac & GMC. State-of-the-art car wash.

166 **Zifko's Tire & Battery Supply** 200 E. Main St., 682-4744.



BAKERY

85 **Ashland Baking Company** 212 Chapple Ave., 682-6010. We are a small artisan bakery specializing in handmade European style breads & pastries, gourmet desserts, sandwiches, salads, spreads, wedding cakes & catering. [www.ashlandbakingcompany.com](http://www.ashlandbakingcompany.com)



CLOTHING

91 **Army-Navy Store** 505 W. Main St., 682-4393. Your one stop shop for work, recreational apparel & footwear. We stock over 150 styles of work boots & steel toes. Brands include Redwing, Carolina, Georgia & Wolverine. The area's largest selection of Carhartt, Lee & Levi clothing & work wear. Complete line of hunting clothing & accessories. Also rainwear, souvenir T-shirts & sweatshirts.

128 **Eclectic** 216 4th Ave. W.

126 **Glik's** 304 W. Main St., Suite 1, 682-6011. Men's & women's clothing. Family owned since 1897 with a strong commitment to our communities, & most of all...our customers.

105 **JCPenney** 401 W. Main St., 682-3444. Fashion & basic apparel, accessories, & home furnishings in a customer-friendly environment.

119 **Mainland Clothing** 311 W. Main St., 682-2864. Quality casual or dressy clothing. Women's regular, plus or petite sizes. Men's regular or big & tall sizes; tuxedo rental & special order suits. "Ashland Oredocker" logo sweatshirts, t-shirts, bottoms in adult & youth sizes.

127 **Maurices** 304 W. Main St., 682-6885. Emerging & current quality fashions in a focused specialty store format targeted to meet the varied lifestyles of men & women with a 20-something attitude.

92 **Moore's Clothes 'N Things** 501 W. Main St., 682-8012. Looking for the perfect gift for a loved one? Moore's has something for the whole family, name brand merchandise for men, women & children by Columbia, Silver, Lee, Levi, Woolrich, Carhartt & Oshkosh. Also souvenir T-shirts & sweatshirts.

110 **Shoe Shack, The** 408 W. Main St., 682-5443. In historic downtown Ashland, family shoes, full line of athletic shoes & fine leather purses, arch support & shoe care products.

116 **Stitch Witch** 422 3rd St. W., Ste. 117, 209-7785. Clothing alterations & repairs, sewing instructions.



COMMUNICATION/ELECTRONICS

46 **Cell Phones Plus** 1810 S. Lake Shore Dr., 682-3277.

159 **CenturyLink** 120 E. Main St., 682-0020. Local telecommunications leader. Providing local phone service, long distance, bus. systems, DSL & dialup Internet services.

38 **Cheqtel Communications** 1310 Lake Shore Dr E., 682-0290. Providing leading edge telecommunications services to Northern WI residential & business customers since 1951. We specialize in internet services, long distance & calling cards, local phone service, phone & security systems & digital TV service.

31 **HSI Business Center** 1901 Beaser Ave., 682-8830. We offer the following products & services: copying, fax, Internet café. Computer repairs & printer supplies. Authorized Xerox Agency & Hewlett Packard/Compaq reseller.

114 **Mobile Connection** 219 4th Ave. W., 685-2500. Your friendly authorized AT&T retailer with several plans & phones to choose from.

171 **Omer Nelson Electric, Inc.** 316 Main St. E., 682-4100. Wisconsin's largest independent Radio Shack dealer. Digital cameras, computer sales & service, satellite radio & TV, electrical supplies, lighting, & cell phones. Accessories, batteries, & knowledge about personal electronics.

144 **Satellite Services North** 115 W. Main St., 682-2984. Your local Dish Network store. Internet, HDTV, DTV, antenna, home theatre, wiring & accessories. TV experts for over 25 years.



CONVENIENCE STORES

154 **Ashland Holiday Station** 110 Ellis Ave., 682-5581. Locally owned & operated convenience store, deli, bakery, hot fresh brewed coffee. Open 24 hrs. Excel plus fuel & touchless car wash.

57 **Ashland Lake Shore Holiday** 915 Lake Shore Dr. West, 682-9755. Quality Holiday motor fuel products, with convenience store & touchless car wash.

162 **Conex Town Mart** 109 E. 6th St., 682-6362. Locally owned Conex convenience store.

180 **Citgo Quik Food Mart** 521 E. Lake Shore Dr., 682-5521.

14 **Midland Services Cenex** 411 Sanborn Ave., 682-2745. Locally owned Cenex convenience store.

23 **River Rock Inn & Bait Shop** 1200 W. Lake Shore Dr., 682-3232. Live bait, beer & convenience items.

66 **Shell Station** 800 Lake Shore Dr. W.

183 **Super H Foods** 511 East Main St., 682-6133. A local favorite, Super H Foods boasts groceries, liquor & wine. We feature the largest beer section in the area.



DINING

163 **2nd Street Bistro** 201 E. Main St., 682-6444. Serving fresh seasonal ingredients prepared simply. Specializing in microbrews & boutique wines. Live music every Wed. & Fri. 6-9 pm. Open year 'round Mon.-Sat. serving lunch & dinner.

65 **Alley, The** 808 W. Main St., 682-4200. Adjacent to the South Shore Brewery & the Deepwater Grille. Outdoor dining, gourmet pizza & Italian food.

62 **Arby's** 824 W. Lake Shore Dr., 682-7300.

53 **Auntie Anne's Pretzels** 2500 Lake Shore Dr. E., 682-2406.

27 **Big Ben's Famous Gyros & Pita Hut** 1020 W. Lake Shore Dr., 682-5200.

79 **Black Cat Coffeehouse, The** 211 Chapple Ave., 682-3680. A unique environment where friends & family can gather to enjoy delicious fresh food made from natural ingredients.

45 **Breakwater Cafe, The** 1808 Lake Shore Dr. E., 682-8388. Overlooking the breakwater lighthouse, offering a full menu along with daily specials & a friendly atmosphere.

84 **Buddie's Burgers** 612 W. Main St., 682-8339. Owned by husband/wife team/best buddies, Shawn & Judy Thayer, is a 50's retro burger joint. The buns are baked fresh every day & we serve fresh ground meat. We serve high quality food, yet maintain reasonable prices without sacrificing the quality. We serve the best old-fashioned milkshakes in town. Open 11 am-7 pm Mon.-Sun.

155 **Burger King** 122 Lake Shore Dr. E., 682-4840. Mega Playland. Drive thru open late.

136 **Cold Fusion of Ashland** 210 W. Main St., 685-2777, [www.coldfusionashland.com](http://www.coldfusionashland.com)

187 **Country Kitchen** 620 Lake Shore Dr. E., 682-4543.

179 **Dairy Queen** 501 Lake Shore Dr. E., 682-4141.

65 **Deepwater Grille, L.C. Wilmarth's** 808 W. Main St., 682-4200. Fine dining & pub fare with the South Shore Brewery's 6 microbrews on tap. Our smoking lounge & non-smoking bars are a must see. Daily specials, Fri. walleye fry, Fri./Sat. prime rib. Children's menu & vegetarian options. Open 7 days a week, 11 am-10 pm, reservations recommended. Join us for a dining experience you are sure to remember.

## MAP # / NAME & LOCATION / DESCRIPTION

- 9 El Dorado** 2320 W. Lake Shore Dr., 682-9658.
- 2 Explorer's Point Restaurant** 30580 U.S. Hwy. 2, 682-0331. Enjoy Ashland's newest restaurant, offering casual, family-friendly dining. Featuring "Dean's famous BBQ Ribs," All-u-can-eat Fish Fry on Fri. & Sun. buffet. Available for business meetings, private parties, weddings & special events. Enjoy our wonderful views of Chequamegon Bay, located next to Best Western Lake Superior Lodge.
- 37 Frankie's Pizza** 1315 Lake Shore Dr. E., 682-9980. Open 4 pm daily, 7 days a week, eat in or take out, pizza & sandwiches.
- 87 Golden Glow Cafe** 519 W. Main St., 682-2838.
- 25 Gramma's Kitchen** 1114 Lake Shore Dr. W., 292-1784.
- 153 Happy Panda** 505 Ellis Ave., 685-9932.
- 11 Hugo's Pizza** 221 Sanborn Ave., 682-8202. Large pizza selection, full grill menu, beer/solarium dining/private party-meeting room, delivery.
- 28 Kentucky Fried Chicken** 1000 Lake Shore Dr. W., 682-5712. Eat-in & take-out catering.
- 3 Lake Rock Café** 30600 US Hwy. 2, 682-5235. Located inside the Best Western Lake Superior Lodge on Chequamegon Bay. Open 6 am to 1 pm daily. Daily breakfast & lunch specials. Also available for private parties or meetings.
- 7 Lakeshore Café** 2524 Lake Shore Dr. W., 682-9806.
- 186 Little Caesar's Pizza** 601 E. Lake Shore Dr., 682-5511. Original round or deep dish pizza. Crazy bread & sauce, Caesar wings, sandwiches, salads & we deliver.
- 69 McDonald's** 720 Lake Shore Dr. W., 682-5455. Open 5:45 am-11 pm Sun.-Thurs, 5:45-12 am Fri. & Sat.
- 141 Molly Cooper's** 101 Lake Shore Dr., 682-6727. Located in the Hotel Chequamegon with waterfront dining service offered on the "Deck." Seasonal menus featuring our famous North Coast Fish Fry & Northwoods Surf 'N Turf. Weddings & events are our specialty! Million-dollar sunsets! You will love our view of the Chequamegon Bay. Centrally located & on Lake Superior.
- 117 New China Restaurant & Lounge** 300 Lake Shore Dr. W., 682-6601. Restaurant & bar serving both Chinese & American cuisine with a relaxed atmosphere & a great view of Lake Superior. Daily specials, carry outs, free delivery, open 7 days a week.
- 129 Oasis Café** 218 4th Ave. W., 682-7700.
- 40 Pizza Pub** 1402 E. Lake Shore Dr., 682-6641. The Thayer family's 50+ years of restaurant experience has the same philosophy today as with day one. Never compromise, & only use the freshest ingredients available. If you are short on time, call ahead & we will have your food ready when you are. Open Sun.-Thurs. 11 am-11 pm, Fri.-Sat. 11 am-midnight. Free delivery.
- 4 Platter, The** 315 Turner Rd., 682-2626.
- 107 Republic Vietnamese Restaurant** 414 Main St. W., 682-6828. Fine Vietnamese dining - dine in or take out.
- 58 Subway** 901 Lake Shore Dr. W., 682-8884. Hot & cold subs on their famous homemade bread. Specializing in party platters & subs. Open Sun.-Thurs. 10 am-midnight, Fri.-Sat. 10 am-3 am.

- 70 Taco John's** 703 W. Lake Shore Dr., 682-0333.



## DISCOUNT

- 167 Dollar Cents** 314 Lake Shore Dr. E., 682-2357.
- 43 Pamida** 1800 Lake Shore Dr. E., 682-6607. For all of your everyday items & more, including full service pharmacy & layaway service.
- 53 Wal-Mart Supercenter** 2500 Lake Shore Dr. E., 682-9699. Retail discount business including grocery store, pharmacy, shoes, jewelry, & various everyday household needs. Open 24 hrs.
- 142 Walgreens** 110 Lake Shore Dr. W., 685-0202.



## ENTERTAINMENT

- 90 Ashland Historical Museum & Gift Shop** 509 W. Main St., 682-4911. "Preserving the Past for the Future" displays, photos, maps & gift shop reflecting Ashland's 150-year history.
- 56 Bad River Lodge & Casino** 10 mi. E. of Ashland on Hwy. 2, 682-7121. The place to be with Las Vegas style gaming, BIG PAYOFFS. 6,000 sq. ft. of convention center.
- 106 Bay Theater** 420 W. Main St., 682-3555. Six theaters, showing first run movies nightly.
- 1 Big Top Chautauqua** 3 mi. S. of Bayfield, 888-244-8368, www.bigtop.org. 900+ seat canvas tent theatre, 60 shows June-Sept. Concerts feature national acts & historical musicals about Lake Superior region. Free shuttle, concessions & gifts onsite.
- 178 Ed's Safari** 423 E. Main St., 682-4055.
- 160 Family Video** 117 3rd St. E., 682-3945.
- 168 Fifth Quarter, The** 301 Main St. E., 682-6760.
- 77 Grubie's** 720 Main St. W., 682-4218.
- 191 Hec's Bar** 713 E. Main St., 682-9364.
- 18 Monk's Bowling Lanes** 218 Sanborn Ave., 682-4956. Bowling alley.
- 123 Movies on Main** 320 Main St. W., 682-5295. 2 & 7 day rentals on all new releases, also available; movies for purchase or we can special order. Open 365 days a year! Locally owned.
- 184 MUGS** 515 E. Main St., 682-9887.
- 21 Neighborly Bar** 1301 W. Main St., 682-9908.
- 104 Office Bar** 407 Main St. W., 682-8583.
- 185 Rinehart Theatre/Chequamegon Theatre Association** 210 5th Ave E., 682-5554. Local theatre productions 3 times a year.
- 72 Scott & Ar's Bar** 717 W. Main St., 682-0649.
- 65 South Shore Brewery** 808 W. Main St., 682-4200.

- 39 Spot, The** 116 E. 14th Ave., 682-9962.

- 169 Stagecoach, The** 315 E. Main St., 682-5803.



## FINANCIAL INSTITUTIONS

- 115 Associated Bank** 221 4th Ave. W., 682-9371. A full service bank with traditional banking products that will fit all your financial needs. 24-hour ATM. Visit us on the web at associatedbank.com ATM locations: Associated Bank 221 4th Ave. W., Northland College 1411 Ellis Ave.
- 158 M&I, Marshall & Ilsley Bank** 100 E. Main St., 682-3422. For investments, personal, business, online & mortgage banking, visit M&I Bank & experience banking...the way it was meant to be. Member FDIC, Equal Housing Lender.
- 118 Northern State Bank** 321 W. Main St., 682-2772. A locally-owned full service bank in the heart of downtown Ashland offering ATMs, 5 drive-up lanes, & online banking plus banking hours in the evenings & on weekends in Ashland County Market. www.nsbashland.com
- 143 Northwoods Community Credit Union** 121 W. Main St., 682-9099. NCCU offers vehicle, ATV snowmobile & boat loans along with over 20 mortgage loan options, 4 types of checking accounts, 3 different credit cards, drive-up ATMs, online banking & 24-hour phone banking. We also offer many types of investment options including IRAs, certificates & savings accounts. See us today!
- 151 Superior Choice Credit Union** 319 Ellis Ave., 685-2725. Follows the credit union philosophy of "People Helping People" by providing our members with the best possible products & services.



## GOLF COURSES

- 5 Chequamegon Bay Golf Club** Hwy. 137 W., 682-8004. Featuring a full service golf shop, club rentals, new fleet of power carts, practice range, putting green, tennis courts, & refreshments in the 19th Hole. Enjoy some of the area's most awe-inspiring views as you test your skills.



## GROCERY STORE/LIQUOR STORE

- 152 Ashland County Market** 401 Ellis Ave., 682-8475. Open 6 am-12 pm. Northern State Bank, money orders, full service grocery with fresh cuts of USDA choice Angus Beef, deli, bakery, & Liquor Depot.
- 80 Chequamegon Food Cooperative** 215 Chapple Ave., 682-8251. A whole foods grocery store specializing in organic & bulk foods, local produce, vitamins & herbs. Member owned. Everyone welcome, open Mon.-Sat. 9 am-8 pm.
- 24 Sixth Street Market** 1413 W. 6th St., 682-9608. Old-fashioned quality service meat case. Fresh cuts of U.S.D.A. choice Heartland Beef.

Featuring homemade fresh bratwurst & many varieties of smoked sausages, bacon & our own smoked hams. We have the largest selection of Wisconsin Cheese.

- 63 Star Liquor** 821 W. Main St., 682-6144. The area's premiere liquor store, featuring the finest selection of wine & spirits. A huge beer selection awaits in our log cabin cooler.
- 53 Wal-Mart Supercenter** 2500 Lake Shore Dr. E., 682-9699.



## HEALTH & BEAUTY

- 107 California Nails** 414 W. Main St., 682-6828.
- 81 Chequamegon Health & Fitness Club** 419 Chapple Ave., 682-8590.
- 20 Escape by the Lake** 1314 Lake Shore Dr. W., 682-4455. We offer an array of hair, nail, makeup, massage & skin care. Experience our blend of treatments, products & expertise in a calming & nurturing environment. Relax. Rejuvenate. Escape.
- 74 Gail's Hair Fashions** 713 W. Main St., 682-4077.
- 59 Hair Affair** 900 W. Main St., 682-9707.
- 88 One-on-One Hair Designing** 515 W. Main St., 682-5800. Full Service Salon. Spa packages available.
- 120 Scissor's Edge** 309 W. Main St., 682-4003.
- 22 Shear Style** 1416 W. 3rd St., 682-8850.
- 53 SmartStyle** 2500 Lake Shore Dr. E., 682-9558.
- 88 Snap Fitness** 513 Main St. W. Snap Fitness 24-7. Fitness 24 hours at your convenience, also offering tanning to our members.
- 188 Styl'n Up North** 720 Lake Shore Dr. E., 685-0747. Hair & Spa Salon. Full service salon for all hair care needs with SDA style pedicures, artificial nails, manicures, facials. Featuring Kenra, Paul Mitchell, Nioxon & Graham Webb.
- 156 Upper Cut** 109 E. Main St., 682-4224. All hair care needs & services offered. Huge range of products. Open evenings to 9 pm. 2 large, air-conditioned, clean tanning rooms. WALK-INS WELCOME!



## HOME DECORATING/HARDWARE

- 98 Ace Hardware** 420 Lake Shore Dr. W., 682-2102. Your helpful hardware, paint, plumbing, electrical, lawn & garden & more store. Services include: computer paint-matching, pipe threading, key cutting, UPS shipping & more.
- 192 Ashland Lock & Key** 707 Main St. E., 682-2934.
- 68 Axel's Saw & Tool Sharpening** 800 Main St. W., 682-4011.
- 15 Bay Area Mulch, LLC** 505 Sanborn Ave., 715-209-1980.
- 35 Cabinetry Etc.** 1900 Ellis Ave., 682-8500.

**MAP # / NAME & LOCATION / DESCRIPTION**

- 172 Carlson Building Supply** 414 3rd Ave. E., 682-3222. Retail lumber & building materials.
- 50 Chicago Iron & Supplies** 701 22nd Ave. E., 682-3011. New steel, welding & industrial supplies, plus a recycling center too!
- 157 Color Center** 121 E. Main St., 682-4901. Full service decorating center, selling Benjamin Moore & Sikkens paints & stains, wall coverings, Hunter Douglas window coverings, carpet, vinyl, wood & tile flooring. Interior decorator on staff, free estimates.
- 29 Custom Carpet** 1004 6th St. W., 682-2916. Full service flooring retailer: carpet, vinyl, wood, ceramic & laminate. Guaranteed installations, free estimates. Call 1-800-682-2916.
- 125 Designers Outlet** 308 W. Main St., 682-4774. Full service interior design, fine floor coverings & area rugs. Interior finishes, window coverings, custom furniture & décor accessories.
- 44 Fastenal** 1802 Lake Shore Dr. E., 682-3151. Offering: fasteners, tools & accessories, cutting tools, hydraulics & pneumatics, material handling, welding supplies, electrical supplies, safety supplies & janitorial supplies.
- 176 McRae True Value Hardware** 118 Prentice Ave., 682-9083. Largest selection of hardware tools in the area. Water heaters, tool rental, Rinse-n-Vac rental & keys.
- 17 Schraufnagel Glass** 1720 Lake Shore Dr. West, 682-0361.
- 167 Sherwin Williams Co.** 314 Lake Shore Dr. E., 682-2320. Sherwin Williams is here for both the contractor and the do-it-yourselfer. We carry paints, stains, wallpaper & applicators. Everything you need to beautify your home both inside & out.

**PHARMACIES**

- 93 Huhn Rx Drug** 522 Main St. W., 682-3123.
- 161 Medicine Shoppe Pharmacy** 510 Ellis Ave., 682-2701.
- 43 Pamida** 1800 Lake Shore Dr. E., 682-8306.
- 53 Wal-Mart Supercenter** 2500 Lake Shore Dr. E., 682-9699.
- 142 Walgreens** 110 Lake Shore Dr. W., 685-0202.

**PRINTING CENTERS**

- 34 Copy Shop, The** 310 Stuntz Ave., 682-6567. Black, white, color reproductions, laminating, book binding, personalized calendars, T-shirts; most jobs done same day.
- 150 Daily Press, The** 122 3rd Ave. W., 682-2313. Ashland's daily newspaper serving northern Wisconsin. Complete web printing services.

**SPECIALTY/GIFT STORE**

- 60 Evergreen Country Shopper** 417 9th Ave. W., 682-8131. We print & distribute shopper advertising papers. Serving northern Wisconsin & the UP of Michigan.
- 82 Heart Graphics** 616 W. Main St., 682-5307. Your downtown printer, located across from the Post Office, specializing in offset printing, embroidery, screen printing, complete copy service & vinyl signage.
- 61 Printing Plus/Screen Line** 419 9th Ave. W., 682-3100. Full service printing & copy center — from b&w to full color, business forms & brochures to posters, books & magazines. Custom screen printing & embroidery. Graphic design & artwork. Signs, banners, specialties.
- 34 American WetWood** 310 Stuntz Ave., Suite 201, 682-6338.
- 13 Ashland Ag Center** 323 Sanborn Ave., 682-2688. Servicing you with large & small animal feeds & agronomy services.
- 109 Ashland Floral** 410 W. Main St., 682-6615.
- 90 Ashland Historical Society Museum & Gift Shop** 509 Main St. W., 682-4911. "Saving the past for the future." Exclusive outlet for Mural Walk items.
- 112 Ashland Jewelers** 402 W. Main St., 682-3155. Fine jewelry for any budget, Seiko watches & clocks, crystal giftware, photo films, batteries & darkroom supplies.
- 41 Bay Area Fire Protection** 1406 E. Lake Shore Dr., 682-4436. Inspections, refills & servicing of fire extinguishers. Cabinets & new extinguishers in stock.
- 97 Bay Area Pawn** 421 West Lake Shore Dr., 682-4222.
- 108 Bay City Cycles** 412 W. Main St., 682-2091.
- 26 Bayside Taxidermy** 1110 Lake Shore Dr. W., 682-3277.
- 122 Book World** 301 W. Main St., 685-9998.
- 16 Country Blossom's** 64715 Gilles Rd., Ashland, 746-2345. Hanging baskets, contained bedding plants & much more. Special baskets made upon request.
- 164 Craft Connection, The** 205 E. Main St., 682-6454.
- 99 Dugger Heating & Cooling** 410 W. Lake Shore Dr., 682-6123. Bay area's premier stove/fireplace showroom — gas, wood, pellet — specializing in Trane/Amana furnaces/central air — residential & small commercial.
- 121 Elle Steven's Hallmark** 307 Main St. W., 682-2250. Hallmark Gold Crown Store, Hallmark cards, Hallmark ornaments, photo frames & albums, Wood Wick candles, Demdaco figurines, Webkins, Precious Moments figurines, Thymes lotions, baby gifts, fashion jewelry.
- 83 Embellishments** 614 W. Main St., 685-0240. Let Embellishments help make "Your Day, Your Way." Carrying a full bridal line, bridesmaid & flower girl dresses, prom & special occasions apparel. Also offering tuxedo rentals, shoes, jewelry, & a special gift line for baby.
- 137 Eye Glass Shoppe** 207 2nd Ave. W., 682-8181.

- 55 Fast Lane Motor Sports** 3122 E. Lake Shore Dr., 682-3278.
- 16 Free Hands Farm** 60455 Summit Rd. W., 682-3596/715-563-0323. Perennials, annuals, vegetables, herbs, cut flowers, raspberries, catering, gift shop, reception/social event area.
- 102 Gabriele's German Cookies & Chocolates** 413 W. Main St., 682-2114. The best hand-made German cookies & chocolates, homemade jams & jellies, seasonal & everyday gifts. Newly added, Cedar Crest ice cream (available during summer season only), cone & European style sundaes. In & outdoor seating available.
- 95 Garland City Inspirations** 516 W. Main St., 682-2171. Inspirational gifts to include wedding, anniversary, baby & children's gifts.
- 102 Heike's Blumen Garden** 413 W. Main St., 682-0296. Fresh cut flowers, arrangements & plants for all occasions, made with European style & know-how.
- 146 Home Expressions** 116 Main St. W., 682-2455. Contemporary gifts & home décor. Large selection of Bridgewater candles, prints, gourmet items, Crabtree & Evelyn, lamps & pottery. Free gift wrapping.
- 30 Home Medical Products** 1601 Beaser Ave., 682-9500. Medical equipment & supplies for use in the home. Equipment includes hospital beds, oxygen, wheelchairs, ambulatory aids & bath aids for sale or rent.
- 103 JC Moon** 411 W. Main St., 682-2529. From whimsical to practical, a global collection for all ages, specializing in imports, clothing & gifts... including herbal tobacco & adult novelties. A real blast from the past. Open 7 days a week year 'round.
- 89 Johnson Flower Shop** 511 W. Main St., 682-2404.
- 67 Lake Superior Cleaners & Launderer** 802 W. Main St., 682-5335. For all of your cleaning needs.
- 138 Lakeside Products** 200 W. 3rd St., 682-9122. For all of your party needs stop in & see what we have.
- 111 Malmberg's Jewelers** 406 Main St. W., 682-3922. A full service jewelry store, providing & servicing all categories of fine jewelry, watches, clocks, giftware, bath products & related accessories.
- 102 Music Center, The** 415 W. Main St., 682-3505.
- 94 New England Store** 518 Main St. W., 682-2171. One of Ashland's oldest businesses, circa 1888, located in the historic Bardon building built in 1884. We offer a wide variety of gifts, jewelry, collectibles & home décor, with free gift wrapping. Open 7 days a week year 'round.
- 135 Northern Business Products** 204 Main St. W., 682-5717.
- 148 Northern Photographics/NP Studio** 112 Main St. W., 682-9670.
- 32 Northwest Optical** 2111 Beaser Ave., 682-0311.
- 100 Northwoods Dyeworks** 417B W. Main St., 682-0588. Top quality yarns, dyes, beads & felting supplies. Focusing on natural fibers, we provide a local source for organic & eco-friendly fibers & dyes. We are also a great source for that special gift with a great selection of books, silks, tie dye, jewelry, hand knits & fair trade hats & bags. Offering classes in a variety of crafts.
- 76 Painted Cottage, The** 705 Main St. W., 682-2395.

- 131 Sateren Eye Care** 218 W. Main St, 682-4666. Doctors of Optometry. Comprehensive eye examinations. Complete optical dispensary including specialty contact lenses & designer eyewear.
- 1 Spirit of the North Gift Shop** 3 mi. W. of Ashland at Northern Great Lakes Visitor Center, 685-2659. Experience the Northland through our large selection of regional books & maps. Wide variety of children's educational items. Array of clothing, gift & souvenir items. Open daily 9 am-5 pm.
- 41 Stove and Upholstery Works** 1406 E. Lake Shore Dr., 682-4331. Wood or gas burning fireplaces & stoves, all related accessories. Full service shop, beautiful displays, upholstery goods & services, open 6 days a week.
- 190 Tattoo Alley** 705 E. Main St., 682-9370.
- 51 Timeless Timber** 2200 E. Lake Shore Dr., 682-9663.
- 113 Trendy Fashions & Gifts** 400 W. Main St., 682-2360. Clothing, gift, baby items, Thymes product, dog treats, home decor & gourmet items. A little something for everyone.
- 64 Vacuum Express** 822 W. Main St., 682-3184.
- 170 VHS Cleaning Service** 302 E. Main St., 682-9676. Cleaning supplies & products.

**SPORTING & SPORTING GOODS**

- 54 Angler's All** 2803 Lake Shore Dr. E., 682-5754. Largest bait & tackle selection in Bay area; fly fishing outfitter; guide service for fishing & hunting; archery & black powder outfitter; unique outdoor gifts.
- 26 Bow-Fly** 1110 Lake Shore Dr. W., 682-3277.
- 1 Sports Hollow** 29195 W. US Hwy. 2, 682-3838. Area's largest retailer for firearms, accessories, gunsmithing & repairs. Public range including: trap, skeet, rifle & pistol. Open 9:30 am-6 pm.
- 49 Sports Stuff** 1904 Lake Shore Dr. E., 682-9681. General sporting goods specializing in archery, black powder, baseball, softball, & hockey. We also do bow repair & skate sharpening. Video archery machine. Call for appointment.

**THRIFT SHOPS**

- 86 Bargain Hut** 420 Chapple Ave., 682-8522.
- 71 Dave's Affordable Furniture** 719 W. Main St.
- 49 Goodwill Industries Retail Store** 104 W. 2nd Ave., 682-4448.
- 134 Thrift Shop** 208 W. Main St., 682-3812.
- 73 Wendy's Widgets** 715 W. Main St.